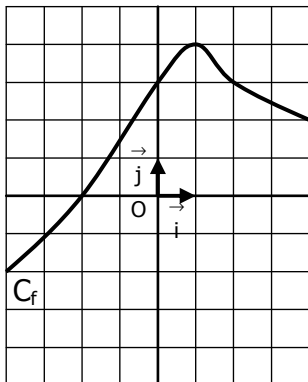
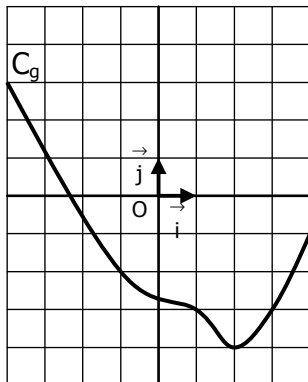


EXERCICE 1B.1

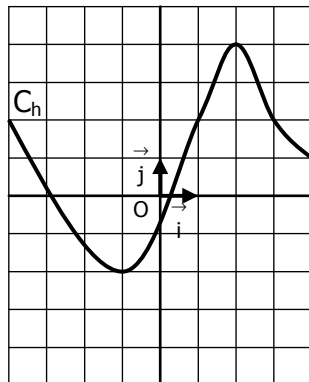
Dresser le tableau de variation de chaque fonction :



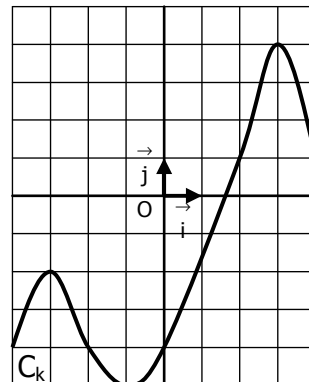
x	-4	4
$f(x)$		



x	-4	4
$g(x)$		



x	-4	4
$h(x)$		



x	-4	4
$k(x)$		

EXERCICE 1B.2

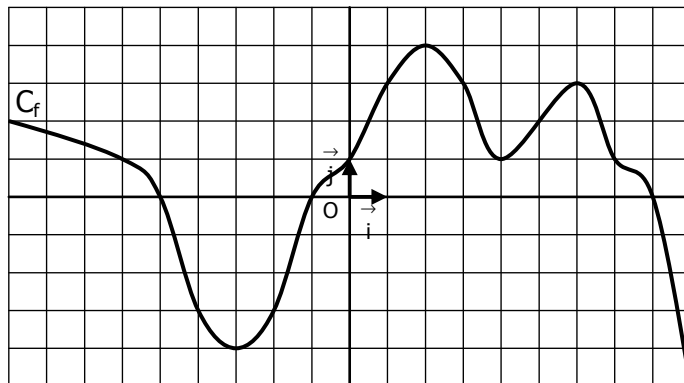
On a représenté la fonction f sur l'intervalle $[-9 ; 9]$:

a. Compléter ce tableau de valeurs de f :

x	-9	-5	-3	0	2	4	6	9
$f(x)$								

b. Dresser le tableau de variation de f :

x	-9							9
$f(x)$								

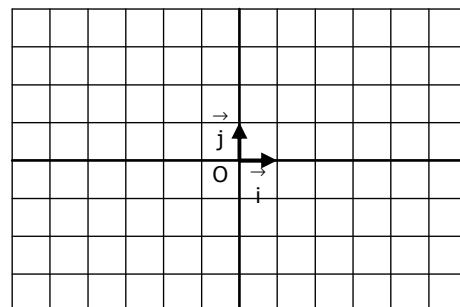


EXERCICE 1B.3

a. Construire une courbe qui correspondrait à ce tableau de variation :

x	-6	-3	0	2	6
$f(x)$	3		2		1

Arrows indicate: (-6, 3) to (0, 2) (decreasing), (0, 2) to (-3, 0) (decreasing), (-3, 0) to (2, 1) (increasing), (2, 1) to (6, 1) (increasing).



b. Construire une courbe qui correspondrait à ce tableau de variation :

x	-6	-5	-1	1	4	5	6
$g(x)$		1		3		4	

Arrows indicate: (-6, 0) to (-5, 1) (increasing), (-5, 1) to (-1, -4) (decreasing), (-1, -4) to (1, 3) (increasing), (1, 3) to (4, 2) (decreasing), (4, 2) to (5, 4) (increasing), (5, 4) to (6, 0) (decreasing).

